

 *Welcome to...*

## **LAURISTON PARK**

---

Located in beautifully landscaped grounds close to the Cambridge Town Centre, Lauriston Park is a very special lifestyle retirement opportunity...

The purpose designed villas offer private and independent living, with a real community atmosphere and all the benefits of the village amenities centre.

Forget your day to day responsibilities and start living your life. Lauriston Park will take care of your house maintenance and lawn mowing and let you get on with the activities you enjoy.

Use your spare time to make new friends and develop new interests in the resort style amenities centre. A heated pool, library, gym, cafe, and activities centre are just some of the facilities available.



Pick and choose the activities and events you get involved in, or just enjoy the quiet relaxation of living in such a charming location with its superbly landscaped gardens. Lauriston Park is living – at your pace.

Peace of mind is also provided with 24 hour push button emergency assistance and regular security patrols.

The Lauriston Park Retirement Village is just over one kilometre from the Cambridge Town Centre and a gentle walk to nearby shops. Located centrally in Waikato, with Hamilton city only 15 kilometres away, you will be able to enjoy all the Waikato has to offer.

**WITH A RANGE OF  
MODERN STYLISH  
VILLAS, LAURISTON  
PARK HAS THE HOME  
FOR YOU.**



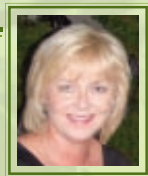
## NEIL GROUP PROFILE

The Neil Group has been operating with consistent success in New Zealand since the early 1950's. Over this period the company has been involved in many types of land subdivision, housing and commercial building development. The Neil Group will have a long term involvement in its villages as owner and manager. You can therefore be assured that the Group is committed to providing excellent homes, services and amenities in its retirement villages.



## LAURISTON PARK'S HERITAGE

The name "Lauriston" comes from the Scottish home town of one of the property's former owners. The site has a long history extending back over the past century. The original family villa, "Whare Ora" built around 1900, was the home of the Rout and Vosper families. This grand heritage villa and its gardens will be carefully restored to their original splendour for residents' use and enjoyment.



FOR ENQUIRIES PLEASE  
CONTACT SANDRA BUCHANAN.



Phone **07 827 0793** Mobile **021 627 767** Email [sandra@lauristonpark.co.nz](mailto:sandra@lauristonpark.co.nz)  
Lauriston Park Retirement Village, 91 Coleridge Street, Cambridge 3432

[WWW.LAURISTONPARK.CO.NZ](http://WWW.LAURISTONPARK.CO.NZ)

